

SMART-OLV 48-250(P)

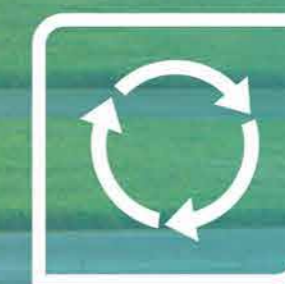
LiFePO₄ Battery Pack



Power monitoring



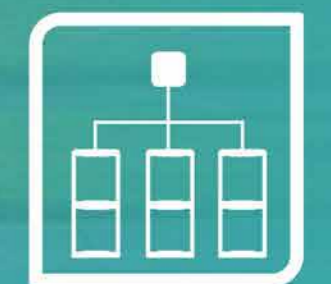
Durable endurance



Long cycle life



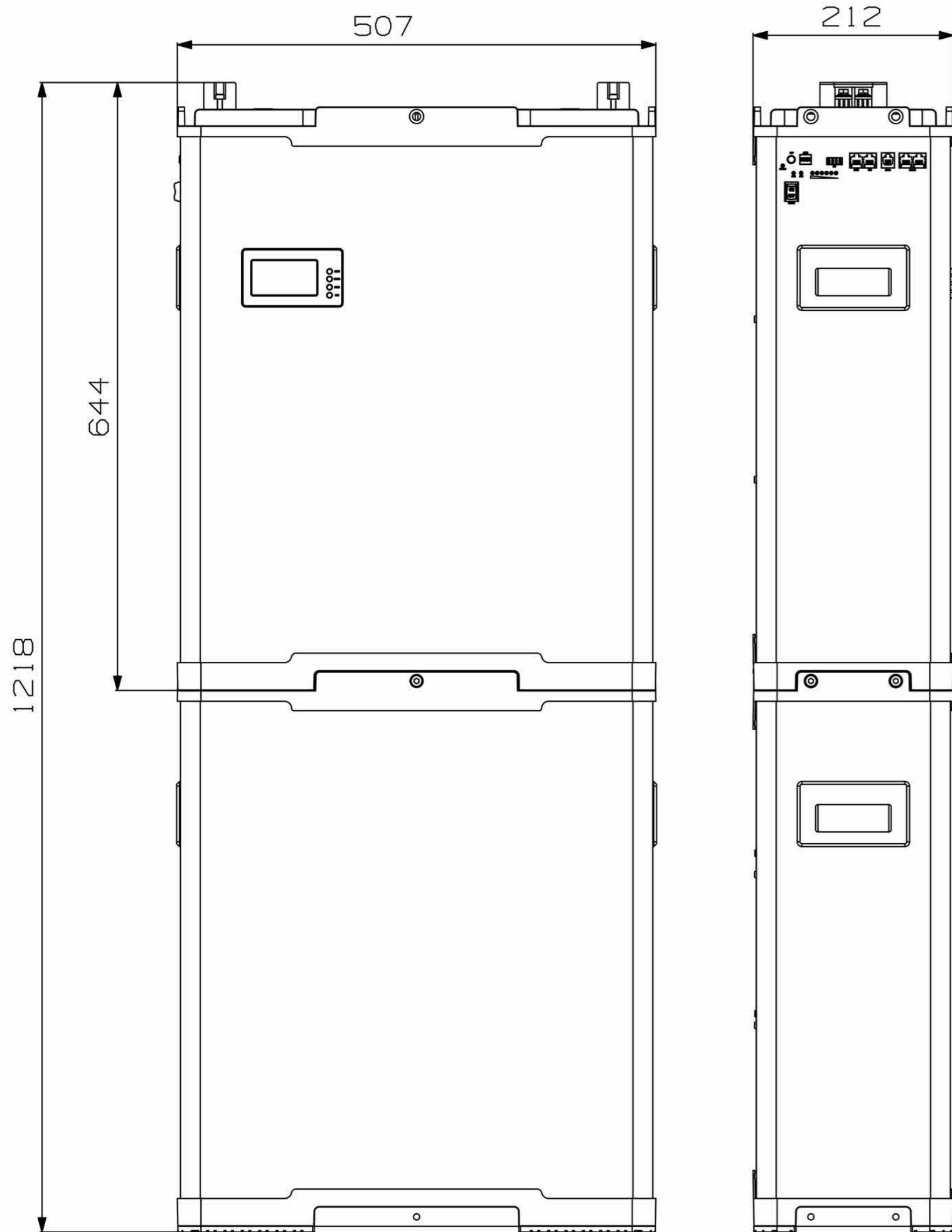
Sufficient storage capacity



Can be used in parallel

SMART-OLV 48-250(P)

LiFePO₄ Battery Pack



- RST
- DO
- OFF/NO
- RS485
- CAN
- RS232
- RS485B





SMART-OLV 48-250(P)
LiFePO4 Battery Pack

Storing the power from the solar panel, to be used as reserve power or emergency power supply. At night or at the time of power outage, it can supply the power to electrical appliances by using the stored energy, to avoid the inconvenience caused by power outage, so that you can calmly deal with the situation of power outages.





SMART-OLV 48-250(P)

LiFePO₄ Battery Pack

For no city power areas, the battery pack can be charged by solar panels and used for night lighting; For the areas that city power is expensive, the battery pack can be charged during the electricity valley value period, and used at the peak power period; For the areas which power off from time to time, the battery pack can be used as UPS, to avoid information loss caused by sudden power outage. The battery pack is applicable to commercial lighting, industrial lighting, home lighting, outdoor lighting, camping tourism, farming, planting, the night market stalls, etc.



Charging Overvoltage Protection



Discharge Undervoltage Protection



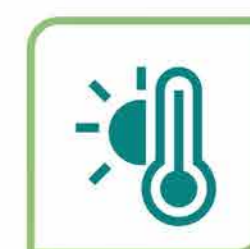
Charging Overcurrent Protection



Discharge Overcurrent Protection



Short Circuit Protection



Temperature Protec

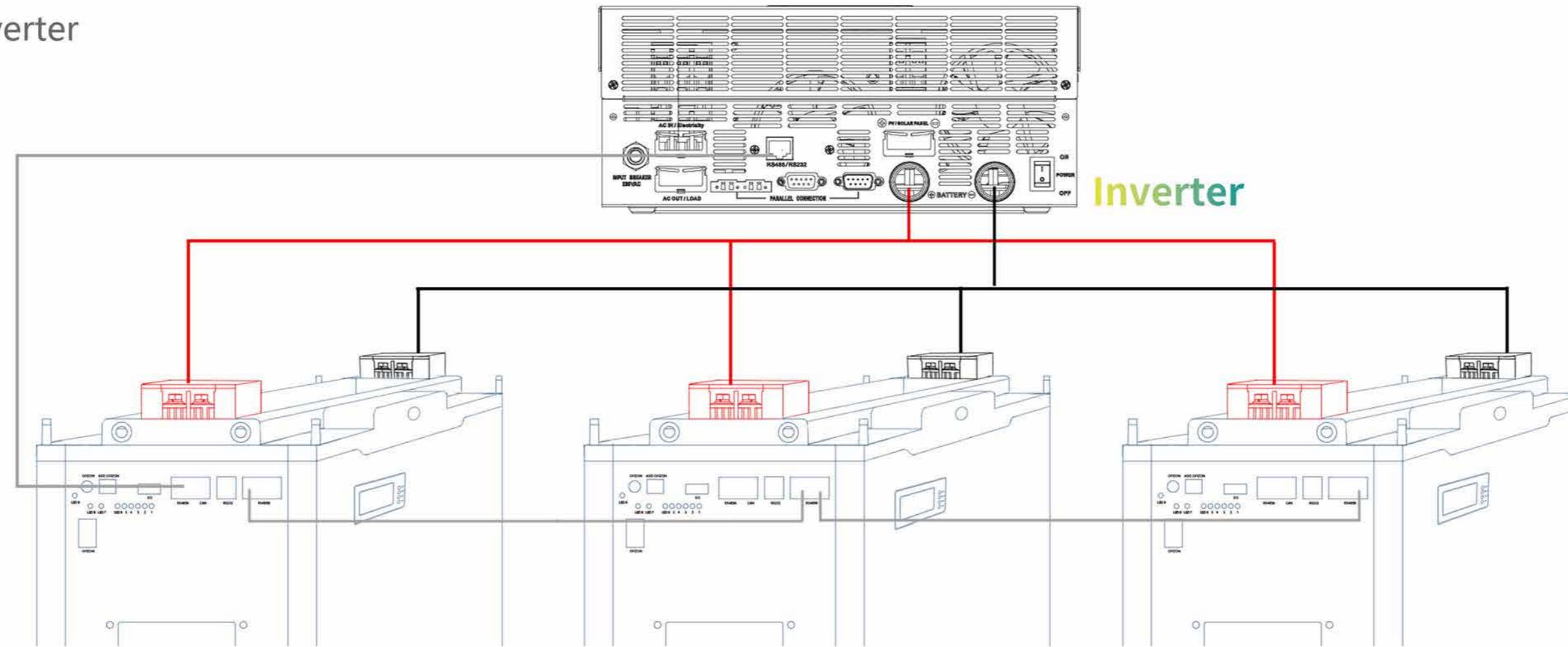


SMART-OLV 48-250(P)

LiFePO4 Battery Pack

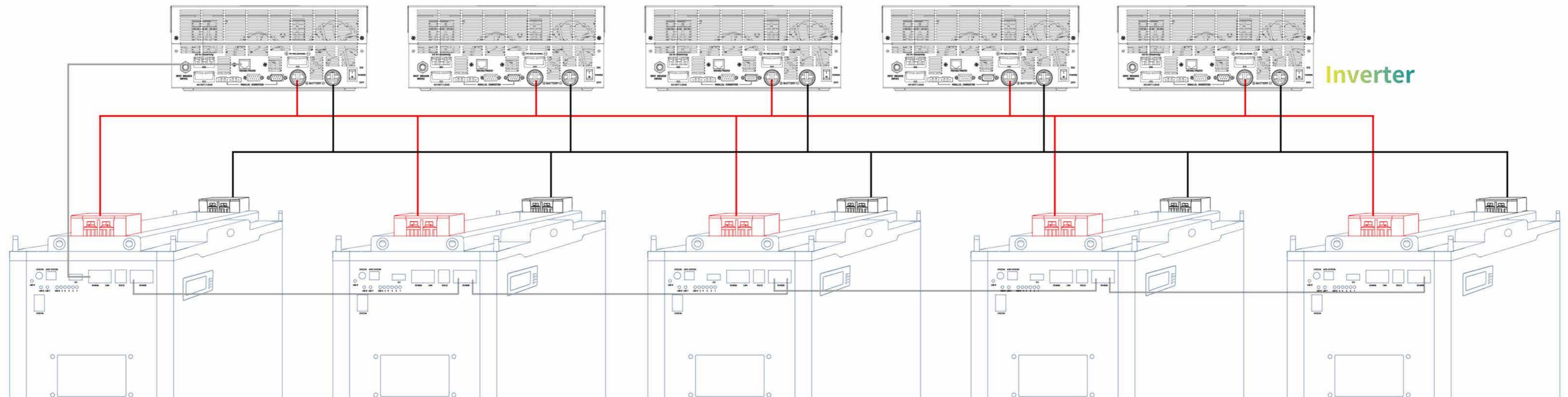
Up to 15 groups can be connected in parallel

1. Multiple batteries connect to one inverter



- Positive pole connecting line
- Negative electrode connection line
- Communication line

2. Multiple batteries are connected to multiple inverters



SMART-OLV 48-250(P)

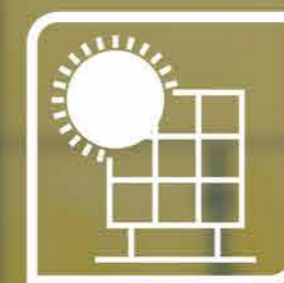
LiFePO4 Battery Pack



PRODUCT PARAMETERS

SMART-OLV 48-250(P)

Basic Specifications	
Cell Type	LiFePO4 Battery/LFP
Nominal Capacity	250Ah
Nominal Voltage	48V (51.2V)
Electricity (kWh)	12.8kWh
Continuously Use Input Current	100A
Battery	
Communication interface	RS485/CAN
Storage Temperature Range	-10-30°C
Operating Temperature Range	0°C-50°C
Storage Humidity	5-95% RH
Atmospheric Pressure	Below 5000 above sea level
Self-Discharge (25°C)	<3%/Month
Depth of Discharge	>80%
C-rate Discharge	<0.8C
Cycle Life	> 6000 times (< 0.5C)
Other	
Certification Standards	UN38.3/CE/MSDS/DGM
Warranty	5 years
Product Size	1218(±2)×507(±2)×212(±2)mm
Package Size	668(±2)×605(±2)×731(±2)mm
Parallel	Up to 15 pcs
Weight	160KGS



Clean energy



Storing energy



Household appliances